



PROFESSIONAL

Trade & professional / Sensors / Motion Detectors / IS D 360

IS D 360

Information copy

The compact class. Recessed ceiling motion detector IS D360 for indoors, ideal for mounting in any standardized spot bezel, installation height up to 2.5 m, in the size of a bulb (e.g. GU10), 360° angle of coverage, max. reach 8 m (tangential), floating contact 50-250 volts.



Details

Live life conveniently and save energy too.

More quality of life, more safety and security and more energy saved with intelligent sensor technology from STEINEL.

Light ON / OFF – automatically.

Highly innovative sensors respond to movements and light levels, automatically switching the light ON and OFF again after a preselected time.

IS D360 recessed ceiling sensor, the 360° infrared motion detector with a max. reach of 8 m for recessing in ceilings in all standardised trims. With a 360° angle of coverage and 180° angle of aperture, the compact infrared motion detector is guaranteed to provide reliable surveillance in a radius of up to 8 m A further feature: The motion detector is no bigger than a lamp (e.g. GU 10 LED) and fits in all standard trims so that all you see is the high-precision multi lens. This means any design and colour of trim can be used.

1000w

1000 W max.

**5 JAHRE
GARANTIE**

5 years functional warranty



2 - 2000 lux



Ideal 2,5 m



IP20



max. 8 m



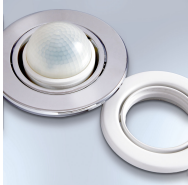
infrared sensor 360°



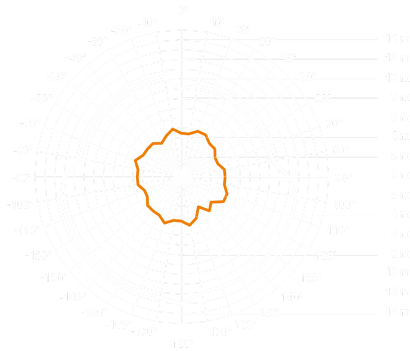
energy saving



5 sec - 20 min



Any trim can be used. Fitting dimensions: Outer dia. = Ø 73 mm, fitting depth = 53 mm



3-sensor-technology IS D360

mounting height 2.8 m

(white = tangential walking
direction

orange = radial walking
direction)

Technical specifications IS D 360

European Article Number (EAN)

4007841601317

Dimensions(w x h x d):

83 x 82 mm dia.

Model

Movement sensor

Voltage

230-240 V/50 Hz

Sensor type

Passive infrared

Application

inside buildings

Installation	Ceiling
Recommended installation height	2.50 m
max. output (resistive load, incandescent lamp)	1000 W
max. output (uncorrected, inductive, $\cos \varphi = 0.5$, e.g. fluorescent lamps)	500 VA max.
max. output (series-corrected)	900 W
max. output (parallel corrected, with $C \leq 45.6 \mu\text{F}$)	500 W
Detection angle	360° with 180° angle of aperture
Reach	8 m max. all round; temperature-stabilised
Sensor system	10 detection levels 720 switching zones
Response value luminosity	2-2000 lx
Teach-function for response value luminosity	No
Time setting	5 sec. - 20 min.
Manual override	selectable, 4h
Degree of protection (IP)	IP20
Includes	standard white trim

Application

indoors

mounting height up to 2.5 m

can be fitted in any standardised spot bezel